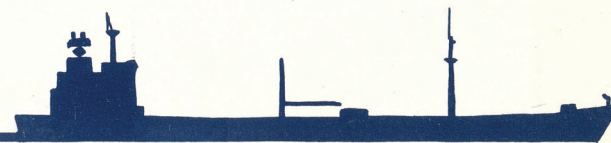
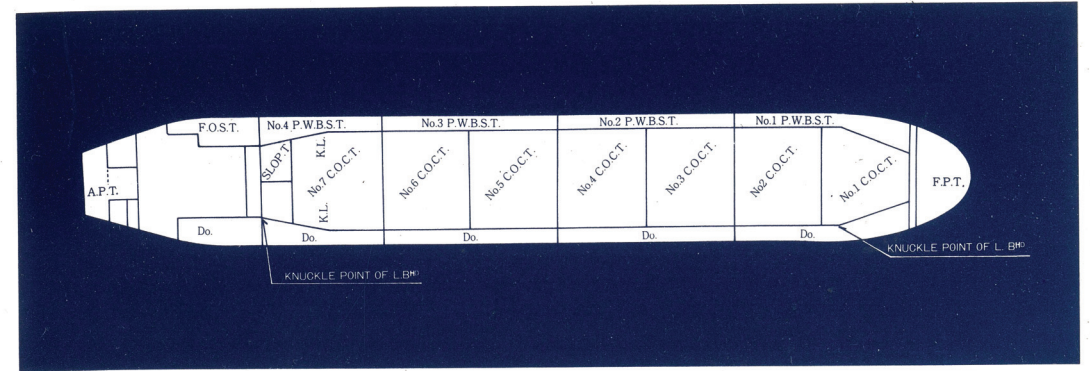




Announcing the Christening of the
M.T. "DEMETRA"

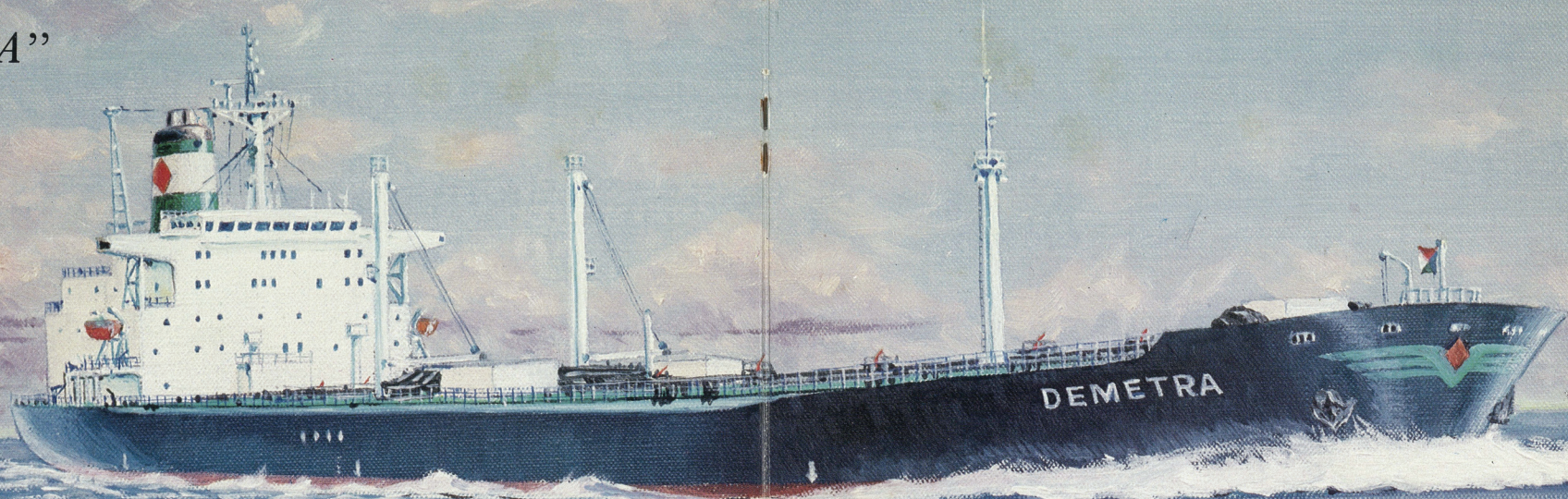




Principal Particulars

Length, Overall	228.60m	Main Engine	Mitsubishi Sulzer Marine Diesel Engine, Model "6RND76M"
Length, Between Perpendiculars	219.00m	Auxiliary Boiler	Mitsubishi CE 2 Drum Water Tube Type 45 tons per hour
Breadth	32.20m	Cargo pump	1,350m ³ per hour × 4 sets
Depth	18.30m	Special Feature	Segregated Ballast Tanks
Draught	12.30m		Protective Location of Segregated Ballast Spaces
Deadweight	abt. 60,050 long tons		Crude Oil Washing System
Gross tonnage	abt. 31,000 tons		Inert Gas System
Cargo Capacity	abt. 72,700m ³		
BHP (Metric)	14.400ps		
Service Speed	15.0Knots		

M.T. "DEMETRA"



KOSUKE
NAKAMURA